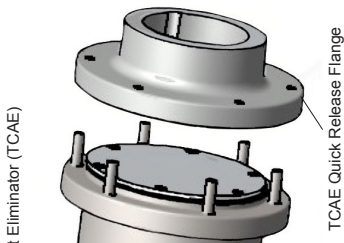
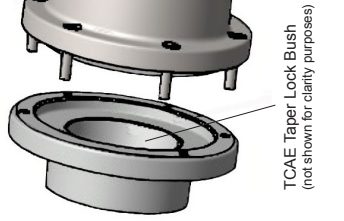
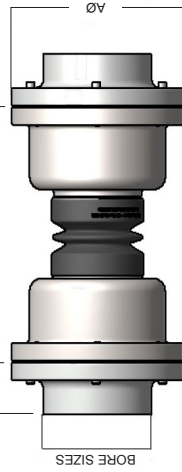
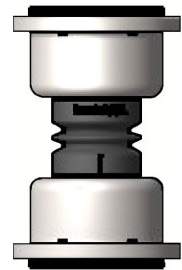


# Thompson Coupling Alignment Eliminator Specifications\*

PARAMETERS	UNIT	TCAE-1	TCAE-2	PARAMETERS	UNIT	TCAE-3	TCAE-4	TCAE-5
MAXIMUM MISALIGNMENT ANGLE	Degree °	10	10	MAXIMUM MISALIGNMENT ANGLE	Degree °	10	10	10
MINIMUM MISALIGNMENT ANGLE	Degree °	1	1	MINIMUM MISALIGNMENT ANGLE	Degree °	1	1	1
MAXIMUM PARALLEL SHAFT OFFSET	E mm	4	5	MAXIMUM PARALLEL SHAFT OFFSET	E mm	8	8	8
MAXIMUM SERVICE TEMPERATURE	°C	120	120	MAXIMUM SERVICE TEMPERATURE	°C	120	120	120
SERVICE LIFE		As per customer application		SERVICE LIFE		As per customer application		
DIMENSION ΦA	mm	148	178	DIMENSION ΦA	mm	215	253	278
DIMENSION B NOMINAL D.B.S.E. (range)	mm	140 (133 to 147)	168 (162 to 178)	DIMENSION B NOMINAL D.B.S.E. (range)	mm	295 (285 to 305)	295 (285 to 305)	315 (300 to 330)
DIMENSION C	mm	48	48	DIMENSION C	mm	61	74	74
BORE SIZES	mm	16 to 60	16 to 60	BORE SIZES	mm	25 to 75	35 to 95	35 to 95
	inch	0.75 to 2.50	0.75 to 2.50		inch	1.25 to 3.00	1.50 to 4.00	1.50 to 4.00

\* Taper Lock Bush sold separately  
\* Quick Release Flange sold separately

\* Taper Lock Bush sold separately  
\* Quick Release Flange sold separately



TCAE Taper Lock Bush (shown extended for display purposes only)

TCAE Taper Lock Bush (not shown for clarity purposes)

TCAE Quick Release Flange

TCAE Quick Release Flange