

TRIAL REPORT

SUBJECT : Thompson Coupling , TCAE-2
Location : PT. Pindo Deli pulp and paper Tbk. / Kerawang mill
PM10, Waste Water Pump no 2 motor 123317102MP
Dated : 03/03/2015
Problem : High Vibration, Coupling failure/ brake (brand, Normex148)



Replacement process



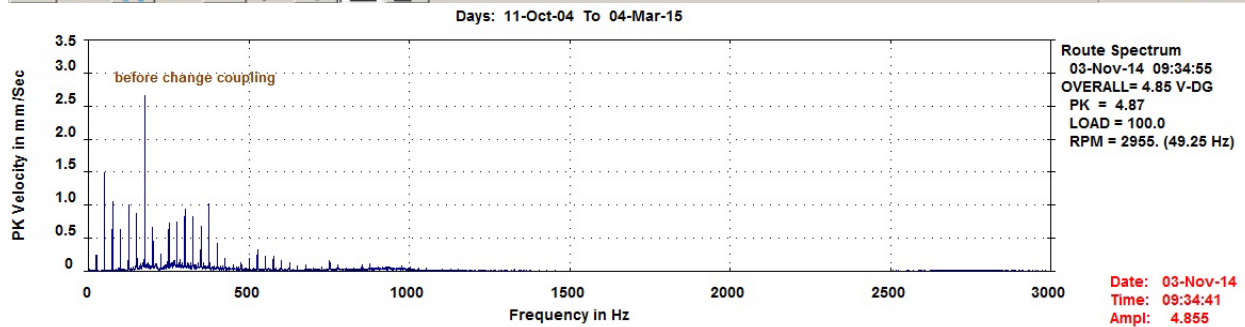
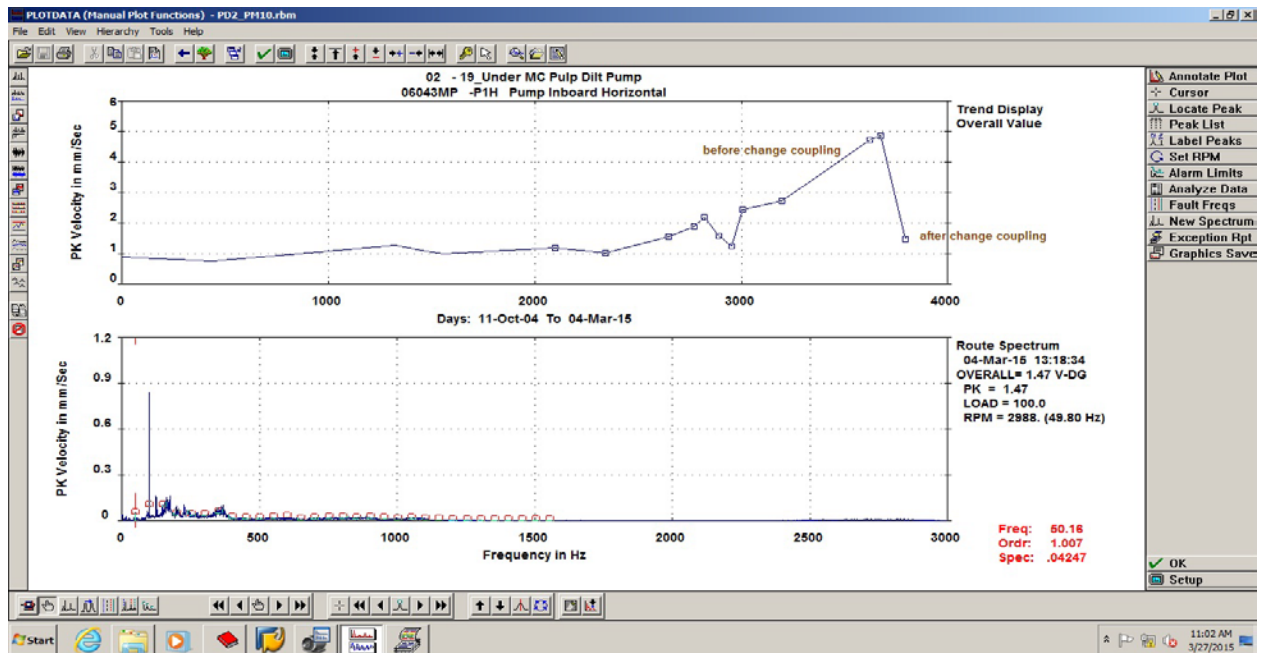
Installation process done



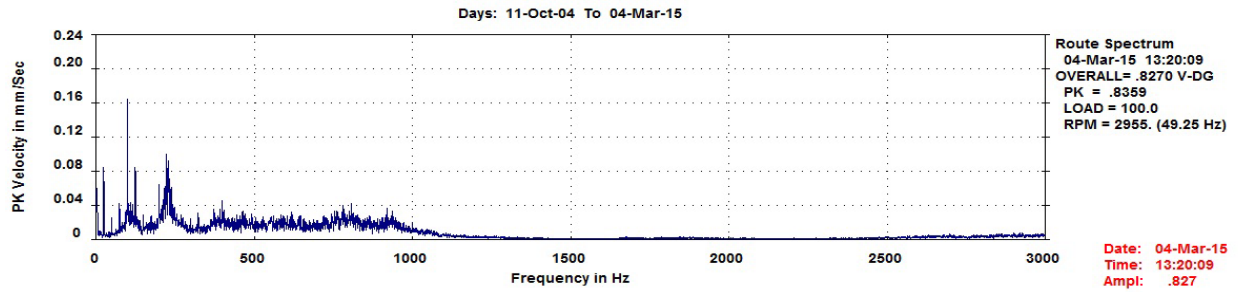
Monitoring and Result.

TRIAL REPORT VIBRATION THOMPSON COUPLING

Before replacement

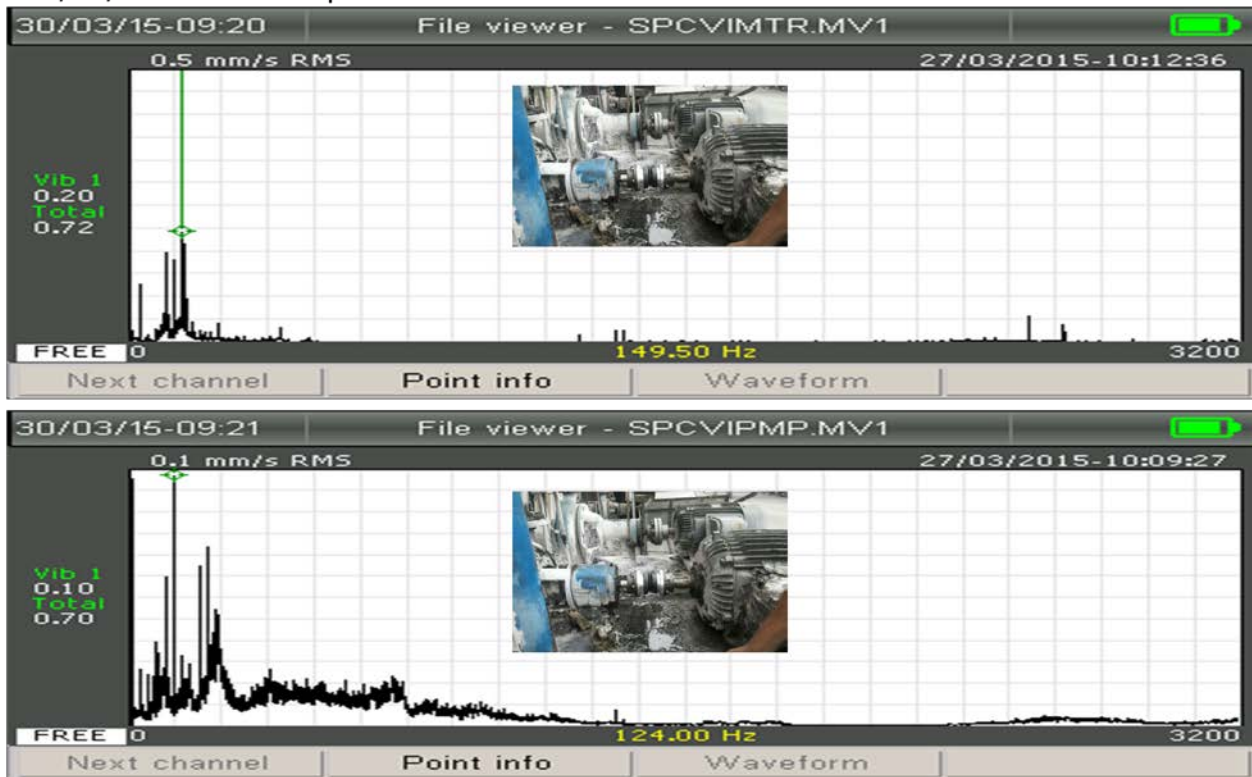


After Replacement with Thompson Coupling.



Monitoring vibration
27/03/15 motor-Pumpinboard

Monitoring vibration
27/03/15 motor-Pump inboard



No high vibration detected, value vibration 0.5 & 0.1mm/sec
No indicated misalignment detected.
(Thompson coupling installed without any alignment tools or Laser alignment)